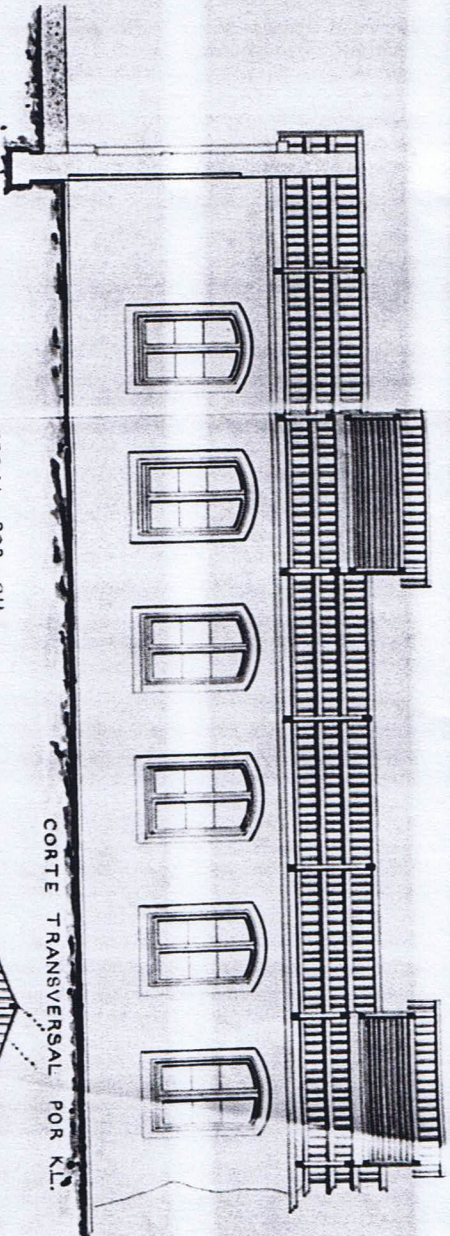
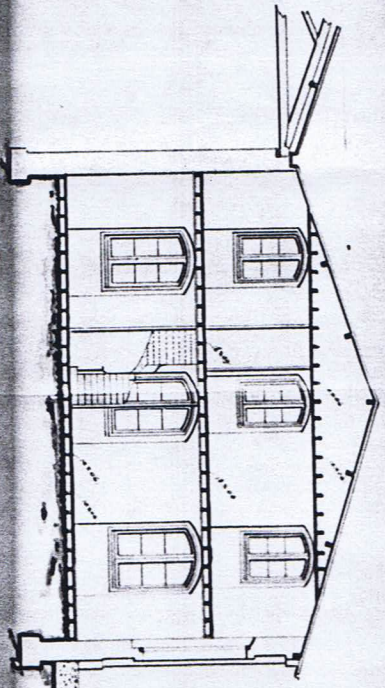


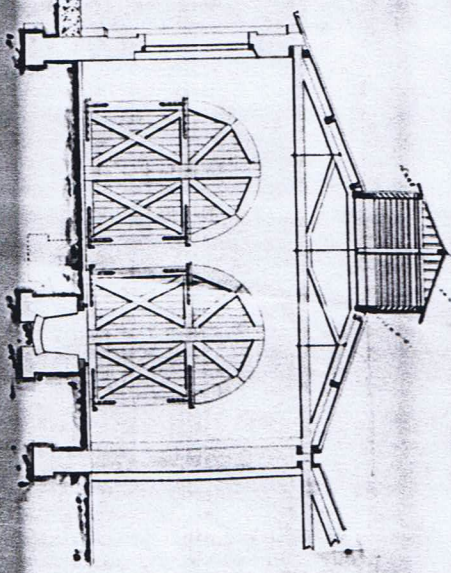
CORTE LONGITUDINAL POR A.B.



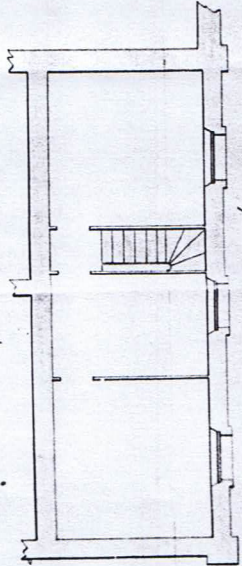
CORTE TRANSVERSAL POR G.H.



CORTE TRANSVERSAL POR K.L.



PLANO DEL PISO SUPERIOR  
para las oficinas.



*Tratado por el sñr. G. & K.  
Año de 1888, en Montevideo.*

*Handwritten signature or initials.*

*1891*

*27891*

*3*